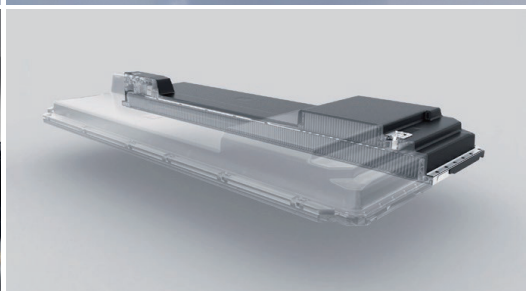


BYD

GO BEYOND HYBRID
SEALION 5 DM-i



BYD COMPANY LIMITED

 www.byd.com  +86-755-89888888

 [Youtube.com/bydcompany](https://www.youtube.com/bydcompany)

 No. 3009, BYD Road, Pingshan, Shenzhen, P.R. China



 Facebook



 Twitter



 Instagram

SPECIFICATIONS & CONFIGURATIONS

Powertrain		Active	Dynamic
Dimensions		4738x1,860x1,710	4738x1,860x1,710
Wheelbase		2,712	2,712
Ground Clearance		150	150
Turning Radius		6	6
Curb Weight		1,675	1,735
Cargo Capacity		502/1339	502/1339
Seating Capacity		5	5
Fuel type	Plug-in hybrid	●	●
Drive mode	FWD	●	●
Power battery capacity (kW · h)	12.96	●	●
Pure electric driving range (working condition/km)	52	●	●
Emission standards	Euro V	●	●
Single-phase AC charging (kW)	3.3	●	●
Power of wall-mounted charging box (kW)	3.5	●	●
Smart charging	Make an appointment to charge	●	●
Feedback control system	Brake feedback control system	●	●
Form of skylight	Panoramic sunroof	—	●
Opening and closing form of skylight	Electric opening and closing	—	●
Opening and closing form of skylight	One-key opening and closing with anti-pinch function	—	●
Front hatch support	Air spring of front hatch cover	●	●
Roof rack form	Matte roof rack	—	●
Antenna form	Shark fin antenna	●	●
Unlocking form of charging port cover	Electrically unlocked	●	●
Rear compartment opening mode	Manual opening	●	—
Rear compartment opening mode	Electric opening	—	●
Tire size	18 inches	●	●
Steering wheel material	Imitation leather	●	●
Instrument form	Full LCD meter	●	●
Gauge Size (inches)	8.8	●	●
Instrument panel material	Molded enamel instrument panel	●	●
Glasses case	Roof glasses case	●	●
Mobile phone wireless charging	Front row 15 W single charger	—	●
The driver's sun visor	Visor with cosmetic mirror (with illuminating lamp) for main driver	●	●
Visor for front passenger	Sun visor of front passenger with cosmetic mirror (with lighting lamp)	●	●
Sunshade	Panoramic sunroof electric sunshade	—	●
12V vehicle power interface	12V vehicle power interface	●	●

Engine & Transmission	Active	Dynamic
System total max power (kW)	156	●
System total max torque (N·m)	300	●
Engine max net power (kW)	72	●
Rev. at max power (rpm)	6000	●
Engine max torque(N·m)	122	●
Rev. at max torque (rpm)	4000-4500	●
Electrical motor max power (kW)	145	●
Electrical motor max torque (N·m)	300	●

Engine & Transmission	Active	Dynamic
Displacement	1498 cc/1.5 L	●
Cylinder	4	●
Transmission	Automatic	●

Control Spec	Active	Dynamic
Front suspension	McPherson style	●
Rear suspension	Multi-link type	●
Smart entry mode	Keyless entry	●
Smart start mode	Keyless start	●
Steering column adjustment	Manual 4-way adjustable	●

Security Spec	Active	Dynamic
---------------	--------	---------

Air Bag	Driver & Front passenger airbags (2)	●	●
	Front side airbags (2)	●	●
Air Curtain	Front and rear integrated side safety air curtain	●	●
Vision aid	High-definition panoramic image	—	●
	Reverse image	●	—
Safety assist system	Anti-lock brake system (ABS)	●	●
	Electronic Vehicle Stability System (ESC)	●	●
	Intelligent dynamic braking system	●	●
	Park Brake Deceleration Control (CDP)	●	●
	Vehicle Dynamic Control (VDC)	●	●
	Electronic Brakeforce Distribution (EBD)	●	●
	Hill Start Control (HHC)	●	●
	Comfort Brake Function (CST)	●	●
	Anti-rollover control system (RMI)	●	●
	Hill Descent Control (HDC)	●	●

Driving assistance	Adaptive Cruise Control (ACC)	●	●
	Traffic sign recognition	●	●
	Intelligent Speed Assistance (ISA)	●	●
	Automatic Emergency Braking (AEB)	●	●
	Forward Collision Warning (FCW)	●	●
	Rear Collision Warning (RCW)	●	●
	Lane Departure Warning (LDW)	●	●
	Lane Keeping Assist (LKA)	●	●
	Blind Spot Detection (BSD)	●	●
Parking radar	Front 2 parking radar	—	●
	Rear 4 parking radar	●	●
Tire pressure monitoring system	Direct tire pressure monitoring system	●	●
Safety accessories	Tire repair device	●	●

Seat Spec	Active	Dynamic
Seat distribution form	2 + 3 seats in two rows	●
Seat reclined	Split Fold 2nd Seats (60:40)	●
Driver's seat	6-way electric adjustment of driver's seat	—
	Heated & ventilated seats (Driver)	—
	Integral headrest for driver's seat	●
Passenger seat	4-way electric adjustment passenger seat	—
	Front passenger seat integral headrest	●
Second row seats	Manual adjustment of the headrest of the second row seat	●

Multimedia Spec	Active	Dynamic
The DiLink ecosystem	The DiLink ecosystem	●
Radio	FM radio	●
	DAB radio	●
Central control screen size	12.8 inches	●
Mobile phone interconnection/mapping	CarPlay	●
	Android Auto	●
Intelligent voice control system	Dual-voice zone voice interaction system	●
Number of speakers	6 speakers	●
USB interface	Front Type-C connector (1)	●
	Front Type-A connector (1)	●
	Second-row Type-C connector (1)	●
	Second-row Type-A connector (1)	●

Lighting Spec	Active	Dynamic
---------------	--------	---------

Headlights	LED headlights	●
Headlight adjustment	Manual headlamp height adjustment	●
Light assist	Automatically turn on the headlight	●
	"Follow me home" headlamp early on/delayed off function	●
	LED daytime running lights	●
Rear combination lamp	Penetrating LED rear combination lamp	●
Dynamic turn signal	Rear dynamic turn signal	●
High mounted stop lamp	LED high mounted stop lamp	●
Charging port lamp	Charging port lamp (monochrome)	●
Interior lights	Driver's foot lamp	●
	Front passenger's foot lamp	●
	Auxiliary dashboard lamp	●
	Luggage compartment lighting	●
	Glove box light	●
Door light	Front door lamp (LED)	●
Indoor light	Front interior light (LED)	●
	Rear interior light (LED)	●
	Rear interior light (LED)	—

Glass and rearview mirror Spec	Active	Dynamic
--------------------------------	--------	---------

Front wiper	Intermittent boneless wiper	●
	Rainfall induction type wiper	●
Rear wiper	Rear wiper	●
Windshield glass	UV protection	●
Rear windshield	UV protection	●
Windshield defogging and defrosting	Front windshield defogging and defrosting	●
	Rear windshield electric heating defogging and defrosting	●
Window glass lift	Four-door window one-key lifting with anti-pinch function	●
Outside rearview mirror	Exterior rear-view mirror of the same body color	●
	Electric adjustment of lens	●
	Heating and defrosting	—
	Electric folding	—
	Exterior rearview mirror foot lamp	●
	Outside rearview mirror blind area indicator lamp	●

Note: "—" means "not available", "●" means "available", "○" means "optional".

Notice
Specs updated: October, 2025

① Actual range will vary depending upon driving/charging habits, speed, conditions, weather, temperature, and battery age. The battery capacity is initial capacity. It will decrease with time and use. The battery age and outside ambient temperature both play a role in charging times.

② The above specifications are for the standard vehicle. It is subject to regional needs and regulations. Some vehicles shown include optional equipment that may not be available in all the regions. All technical specifications subject to change without notice. Visit BYD dealer for more details.

③ Please contact sales team to confirm whether these networking-related functions and services are available.

Interior Color Options



Black

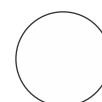
Exterior Color Options



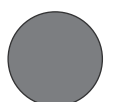
Deep Sea Blue



Cosmos Black



Aurora White



Harbour Grey