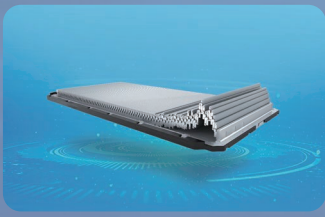


DRIVE THE FUTURE WITH A NEW WAVE



SAFETY



EVERY DRIVE IS TRUSTWORTHY.

BYD DOLPHIN is backed by BYD advance blade battery technology and advanced safety features.

ELECTRIFIED



POWER UP WITH INTELLIGENT ELECTRIC DRIVING.

BYD DOLPHIN is an intelligent car with smart connectivity, voice control and advanced driving assistance for an enhanced electrified driving experience.

AESTHETICS



DIVE INTO ELECTRIC FUN.

BYD DOLPHIN offers a delightful and easy-going driving experience, feel free to take control and enjoy the ride. Test drive it now.

SPACE



COZY IN EVERY MOMENT.

BYD DOLPHIN offers an enjoyable ride for all passengers, with a roomy interior comparable to that of C-Segment vehicles. Seeing is believing.



	Dynamic Standard Range	Premium Extended Range
Dimensions		
Overall length (mm)		4,290
Overall width (mm)		1,770
Overall height (mm)		1,570
Wheel track - front/rear (mm)		1,530/1,530
Wheelbase (mm)		2,700
Ground clearance laden (mm)		130
Powertrain		
Motor type	Permanent magnet synchronous motor	
Drivetrain	Front-Wheel Drive	
Maximum power (kW)	70	150
Maximum torque (N·m)	180	310
Acceleration 0-100km/h (s)	12.3	7.0
Driving range: WLTP (km)	340	427
Seating capacity	5	5
Battery type	BYD Blade Battery	BYD Blade Battery
Battery capacity (kWh)	44.9	60.48
Chassis		
Front suspension	Mac pherson strut	Mac pherson strut
Rear suspension	Torsion beam	Multi-link
Front brake	Ventilated disc	Ventilated disc
Rear brake	Disc	Disc
Wheel type	Alloy	Alloy
Tyre size	195/60 R16	205/50 R17

	Dynamic Standard Range	Premium Extended Range
New Energy		
Portable home charger (Type G)	○	○
AC charging port - Type 2	●	●
DC charging port - CCS 2 Standard range (60kW)	●	-
DC charging port - CCS 2 Extended range (80kW)	-	●
V2L function	●	●
V2L discharge adapter (Type G)	○	○
Regenerative braking	●	●
Safety and Security		
Front airbags - driver & front passenger	●	●
Side airbags - driver & front passenger	●	●
Side curtain airbags - front & rear	●	●
Dual Stage Pretensioner on front seat belts	-	●
Pretensioner on front seat belts	●	-
Pretensioner on rear seat belts	●	●
Seat belt reminder - front & rear	●	●
Tyre Pressure Monitoring System (TPMS)	●	●
ISOFIX child restraint anchorage points (outer rear seats)	●	●
Intelligent power brake system	●	●
Anti-Lock Braking System (ABS)	●	●
Electric Parking Brake System (EPB)	●	●
Electronic Stability Control (ESC)	●	●
Traction Control System (TCS)	●	●
Electronic Brake Force Distribution (EBD)	●	●
Door Open Warning (DOW)	●	●
360° view monitor	●	●
Front 2 ultrasonic radars	●	●
Rear 3 ultrasonic radars	●	●
Adaptive Cruise Control (ACC)	●	●
Automatic Emergency Braking System (AEB)	●	●
Lane Departure Warning (LDW)	●	●
Lane Keeping Support (LKS)	●	●
Predictive Collision Warning (PCW)	●	●
Rear Collision Warning (RCW)	●	●
Blind Spot Detection (BSD)	●	●
Rear Cross Traffic Alert (RCTA)	●	●
Rear Cross Traffic Brake (RCTB)	●	●
Lane Departure Prevention (LDP)	●	●
Emergency Lane Keeping Assist (ELKA)	●	●
Lane Change Collision Warning (LCW)	●	●

- NOTE**
- The real range is influenced by many factors such as individual driving style, load, traffic etc. The declared range is estimated for reference only.
 - Bluetooth® is a registered trademark of Bluetooth SIG, Inc. Compatibility and functionality varies depending on device.
 - Apple CarPlay™ is a registered trademark of Apple Inc. Requires compatible device, USB connection, Available in limited countries.
 - Colours depicted are a guide only and may vary from actual colours due to the printing.
 - Driving assist system are not a substitute for the driver's responsibility of the vehicle.
 - BYD reserves the right to vary vehicle specifications and standard features from those detailed in this brochure.

	Dynamic Standard Range	Premium Extended Range
Exterior		
Electrically heated and adjustable exterior mirrors	●	●
Electrically retractable exterior mirrors	●	●
Panoramic glass roof	-	●
Front boneless wiper	●	●
Rear wiper	●	●
Interior		
Three-spoke steering wheel	●	●
Electric power assisted steering system	●	●
5" digital instrument panel	●	●
Manual dimming interior rear view mirror	●	●
Mobile phone wireless charging	-	●
Synthetic leather seat	●	●
60/40 split fold rear seats	●	●
6-way manual adjustment - driver seat	●	●
4-way manual adjustment - front passenger seat	●	●
Ventilated front seats	●	●
Height Adjustable Headrests - rear seats	●	●
Entertainment		
FM radio	●	●
*Bluetooth® phone connectivity and audio streaming	●	●
12.8" intelligent rotating touch screen	●	●
6 speakers	●	●
Satellite Navigation	●	●
*Apple CarPlay® (USB)	●	●
Voice assistant	●	●
USB × 2, Centre console	typeA+ typeC	typeA+ typeC
USB × 2, Rear	typeA+ typeC	typeA+ typeC
Light		
LED headlight	●	●
Follow me home headlight	●	●
LED daytime running light	●	●
LED taillight bar	●	●
LED front reading light	●	●
LED rear reading light	●	-
LED rear side reading light	-	●
Luggage compartment light	●	●
High Beam Assist (HMA)	●	●
Comfort & Convenience		
12V socket	●	●
Keyless entry & Keyless start	●	●
Portable card key	●	-
Driver's window one touch up-down with anti-pinch	●	-
4-door window one touch up-down with anti-pinch	-	●
Automatic air-conditioning	●	●
Heat pump	●	●
PM2.5 air filter (without display)	●	●
Tyre repair kit	●	●

EXTERIOR & INTERIOR COLORS

Premium Extended Range		
Dynamic Standard Range		

BYD COMPANY LIMITED

www.byd.com +86-755-89888888

Youtube.com/bydcompany

No. 3009, BYD Road, Pingshan, Shenzhen, P.R. China



Facebook



Twitter



Tiktok



Instagram